

CYNGOR SIR PENFRO

CYFLWYNO CROESFAN TWCAN A GWAREDU AR Y GROESFAN SEBRA SY'N

BODOLI EISOES - A4139, ORANGE WAY, PENFRO 2021

Datganiad o'r Rheswm

Mae'r Cyngor yn cynnig cyflwyno croesfan Twcan newydd ar yr A4139, Orange Way a chael gwared ar y groesfan Zebra bresennol yn y lleoliad hwn. Mae'r groesfan arfaethedig wedi'i lleoli yn ymyl Ysgol Grove a bydd yn darparu man croesi diogel i gerddwyr a beicwyr fel ei gilydd; gan gysylltu rhwng y llwybrau cyd-ddefnyddio ar bob ochr i Orange Way.

Mae'r gwaith yn cael ei ariannu gan Lywodraeth Cymru fel rhan o'r rhaglen Llwybrau Diogel mewn Cymunedau, ac mae'n rhan o becyn o fesurau sy'n cael ei weithredu yng nghyffiniau'r Ysgol.

HYSBYSIAD I'R CYHOEDD

CYNGOR SIR PENFRO

CYFLWYNO CROESFAN TWCAN A GWAREDU AR Y GROESFAN SEBRA SY'N

BODOLI EISOES - A4139, ORANGE WAY, PENFRO 2021

Rhoddir HYSBYSIAD drwy hyn bod Cyngor Sir Penfro, wrth arfer ei bwerau o dan Adran 23 o Ddeddf Rheoleiddio Traffig Ffyrdd 1984, yn bwriadu cyflwyno croesfan twcan, fel y manylir yn atodlen 1 a gwaredu'r groesfan sebra sy'n bodoli eisoes, fel y manylir yn atodlen 2.

Mae croesfan twcan wedi'i gynllunio ar gyfer cerddwyr a beicwyr ac fe'i defnyddir fel arfer wrth ymyl llwybr beicio (ni chaniateir i feicwyr groesi'r ffordd wrth ddefnyddio croesfannau sebra, pelican neu bâl). Mae ganddynt yr un arwyddion â chroesfannau pelican, ond yn cynnwys symbol beicio gwyrdd wrth ochr y dyn gwyrdd.

Cynllun croesfannau sebra yw streipiau llydan du a gwyn ar draws y ffordd gyda goleuadau melyn fflachiol. **Rhaid** i fodurwyr ildio pan mae rhywun yn defnyddio'r groesfan'. Fodd bynnag, dylai cerddwyr aros ar ymyl y palmant er mwyn aros yn ddiogel nes bod y cerbydau sy'n nesáu yn stopio.

Atodlen 1

Cyflwynid croesfan twcan ar Orange Way (A4139) Penfro, gyda'r canol wedi'i leoli 65 metr i'r gogledd-orllewin o Grove Hill. Byddai'r groesfan wedi'i hategu gan farciau igam-ogam cysylltiedig, lle gwaherddid cerbydau rhag stopio ar bob adeg, a fyddai'n cael eu gosod ar y naill ochr a'r llall i'r groesfan.

Atodlen 2

Gwaredu'r groesfan sebra sy'n bodoli eisoes, gyda'r canol wedi'i leoli 65 metr i'r gogledd-orllewin o Grove Hill.

Gellir astudio cynllun sy'n dangos lleoliad y groesfan ar-lein yn

<https://www.sir-benfro.gov.uk/rheoleiddio-traffig-ffyrdd>

Os hoffech wrthwynebu'r cynnig, dylech anfon y rhesymau dros eich gwrthwynebiad drwy gwblhau'r ffurflen adborth ar-lein neu'n ysgrifenedig i'r islofnodedig erbyn y 17 diwrnod o Fawrth 2021. Dyfynnwch: ORANGE -P/C

Dyddiedig 24 Chwefror 2021

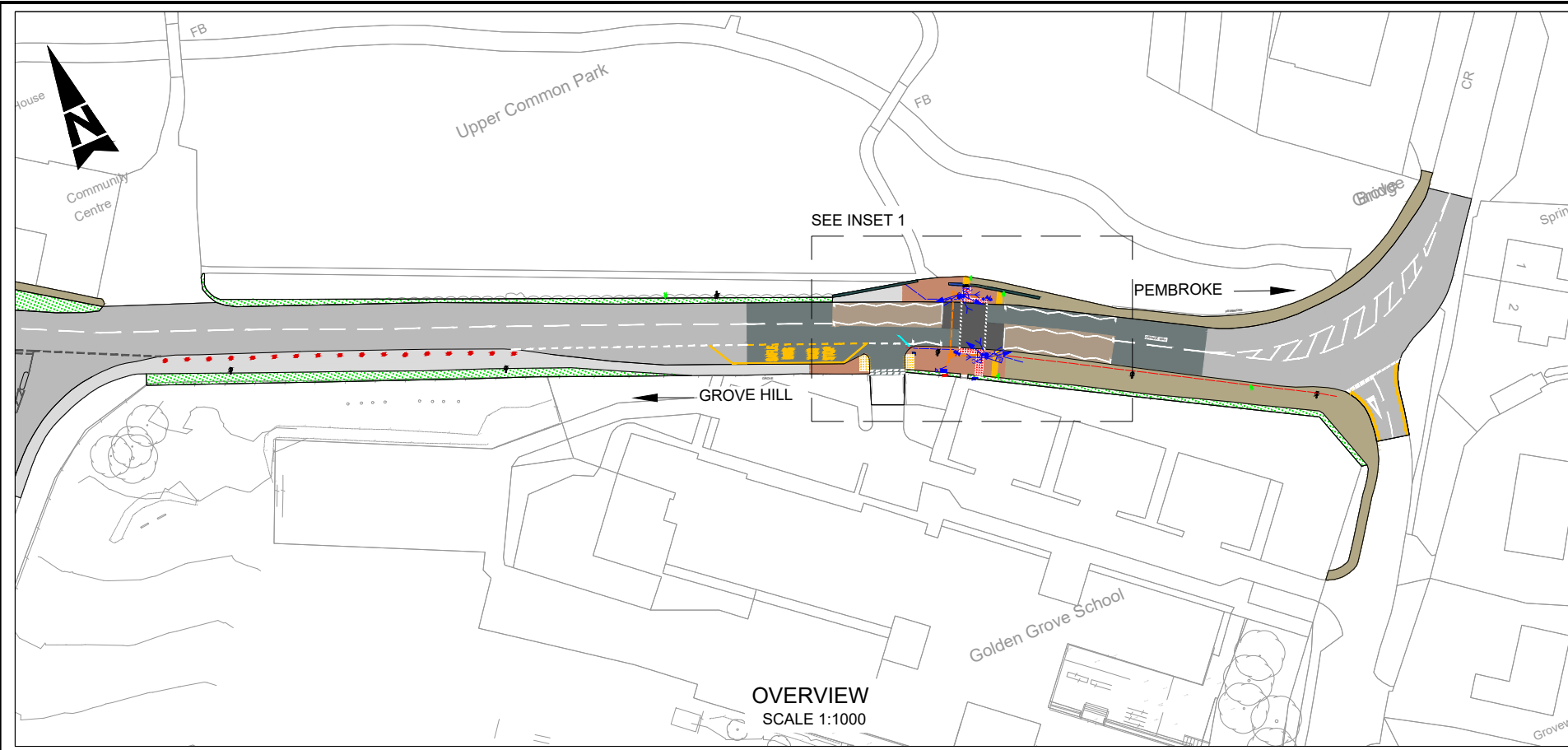
Darren Thomas

Pennaeth Seilwaith

Cyngor Sir Penfro

Neuadd y Sir, Hwlfordd

DO NOT SCALE



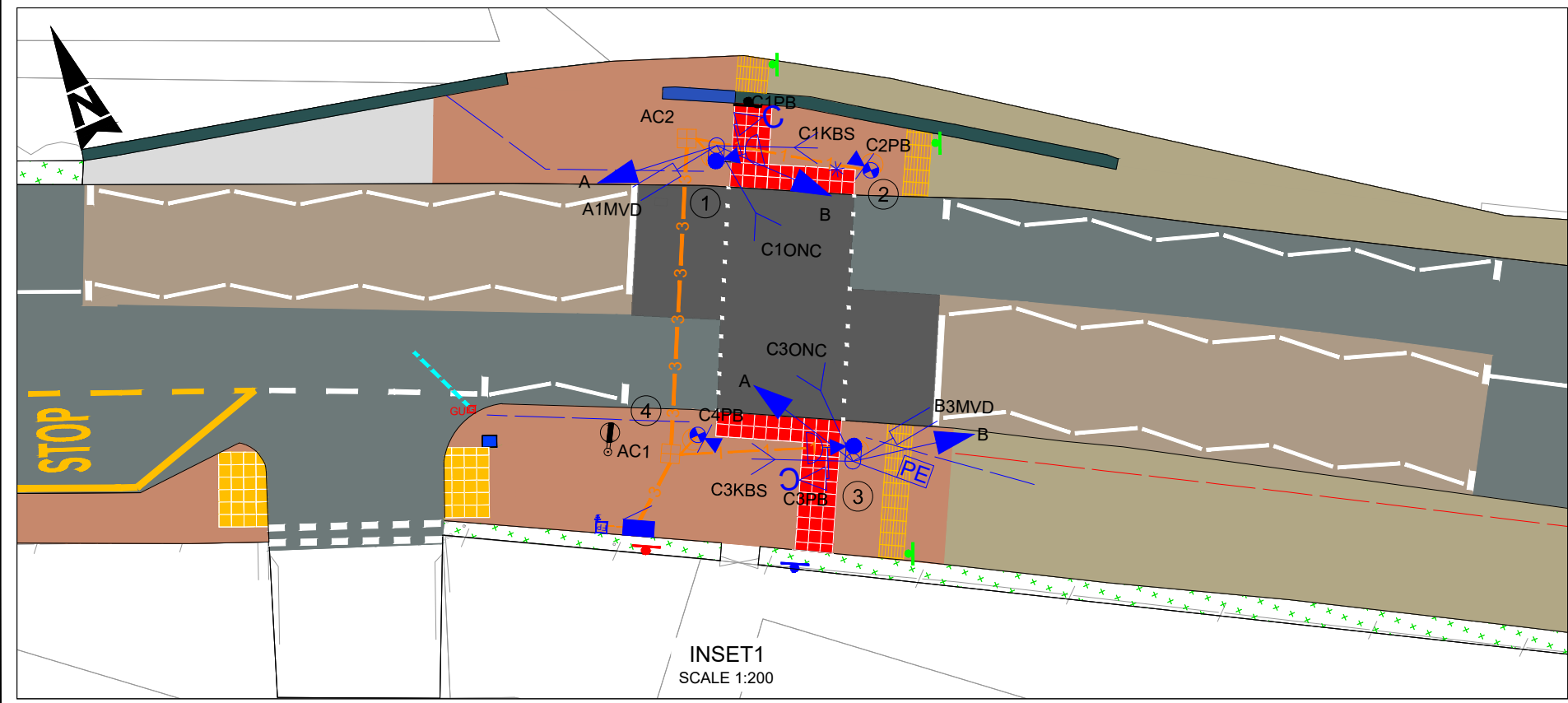
OVERVIEW
SCALE 1:1000

NOTES:

- DIMENSIONS ARE IN METRES UNLESS OTHERWISE STATED.
- THIS DRAWING SHALL BE READ IN CONJUNCTION WITH APPENDIX 12/5 TRAFFIC SIGNAL EQUIPMENT REQUIREMENTS AND APPENDIX 5/2 DUCTING REQUIREMENTS.
- ALL TRAFFIC SIGNAL EQUIPMENT TO HAVE A MINIMUM CLEARANCE OF 450mm FROM EDGE OF CARRIAGEWAY.
- TRAFFIC SIGNAL POLES SHALL BE POSITIONED 0.8m FROM CARRIAGEWAY EDGE AND 0.5m FROM TACTILE PAVING.
- A MINIMUM CLEARANCE OF 2.4m SHALL BE PROVIDED BETWEEN THE BOTTOM OF THE SIGNAL HEAD AND FINISHED FLOOR LEVEL.
- TRAFFIC SIGNAL POLES, CONTROLLER AND CONTROLLER BASE SHALL BE FINISHED IN GREY.
- PUSHBUTTON UNITS SHALL BE MOUNTED SO THE BUTTON IS POSITIONED AT 1.1m FROM FINISHED FLOOR LEVEL.
- ALL PUSH BUTTON UNITS SHALL BE BI-LINGUAL AND BE EQUIPPED WITH TACTILE ROTATING CONES.
- AUDIBLE DEVICES SHALL BE INSTALLED INTO THE PUSH BUTTON UNITS ON POLES 1 AND 3.

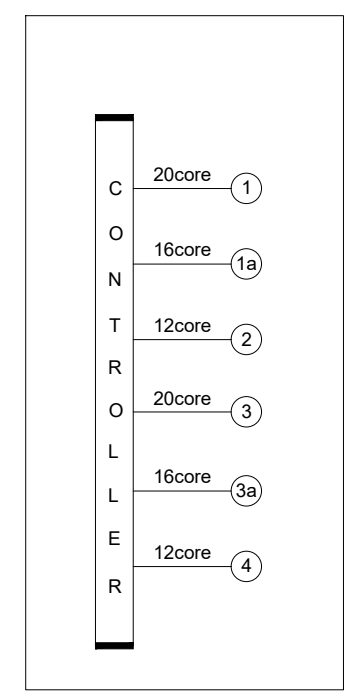
KEY:

- SIGNALS EQUIPMENT**
- 4.3m 114mm DIA. STEEL 'SWAN NECK' TRAFFIC SIGNAL POLE (GREY) WITH LOW-LEVEL ACCESS
 - 2m 114mm DIA. STEEL TRAFFIC SIGNAL POLE (GREY)
 - PRIMARY RAG TRAFFIC SIGNAL HEAD
 - ABOVE GROUND VEHICLE DETECTOR (MVD)
 - PEDESTRIAN ON-CROSSING DETECTOR
 - KERBSIDE DETECTOR
 - PHOTO-ELECTRIC CONTROL UNIT (PECU)
 - NEARSIDE COMBINED TOUCAN DISPLAY AND PUSH BUTTON UNIT (WITH TACTILE ROTATING CONE)
 - PUSH BUTTON UNIT (WITH TACTILE ROTATING CONE)
 - TRAFFIC SIGNAL CONTROLLER (GREY)
 - ELECTRICAL/ISOLATION FEEDER PILLAR
- DUCTS, ACCESS CHAMBERS**
- 1 X 50mm TRAFFIC SIGNAL DUCT (ORANGE)
 - 1 X 100mm TRAFFIC SIGNAL DUCT (ORANGE)
 - 3 X 100mm TRAFFIC SIGNAL DUCT (ORANGE)
 - 600mm X 600mm TRAFFIC SIGNAL ACCESS CHAMBER
 - 115mm DIAMETER RETENTION SOCKET

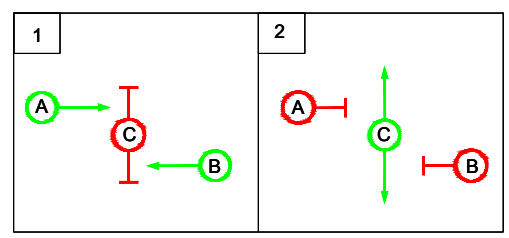


INSET1
SCALE 1:200

CABLE SCHEMATIC DIAGRAM



PHASING AND STAGING DIAGRAM



REPRODUCED FROM THE ORDNANCE SURVEY MAPPING WITH THE PERMISSION OF THE CONTROLLER OF HER MAJESTY'S STATIONERY OFFICE. © CROWN COPYRIGHT. UNAUTHORISED REPRODUCTION INFRINGES CROWN COPYRIGHT AND MAY LEAD TO PROSECUTION OR CIVIL PROCEEDINGS. PEMBROKESHIRE C.C. LOCAL AUTHORITY LICENCE NUMBER LA 100023344 2020

Description	Status	Revision	Drawn	Checked	Reviewed	Authorised	Issue Date
APPROVED - CONSTRUCTION	A3						
DESCRIPTION							
FINAL ISSUE	S2	P01	CW	SNP	MT	---	20/01/21
SECOND ISSUE	S4	P02	CW	SNP	MT	---	02/02/21
SECOND ISSUE	A3	C01	CW	SNP	MT	CD	05/02/21

Drawing Suitability: APPROVED - CONSTRUCTION Status: A3

ATKINS
Member of the SNC Lavalin Group

West Glamorgan House
12 Orchard Street
Swansea
West Glamorgan
SA1 5AD

Tel: +44 (0)1792 641172
Fax: +44 (0)1792 472019
www.atkinsglobal.com

Copyright © SNC Lavalin (2020)

PEMBROKESHIRE COUNTY COUNCIL

SAFETY, HEALTH AND ENVIRONMENTAL INFORMATION

In addition to the hazards/risks normally associated with the types of work detailed on this drawing, note the following significant residual risks (Reference shall also be made to the design hazard log).

Construction	None
Maintenance / Cleaning	None
Use	None
Decommissioning / Demolition	None

Project Title	GOLDEN GROVE CROSSING		
Drawing Title	TRAFFIC SIGNALS DETAILED DESIGN		
Drawing Number	PE05_801	Originator	ATK - HTS -
Project	SWMWREC	Volume	- DR - CH - 000001
Location		Type	
Original Size	A1	Scale	AS SHOWN
Project Ref. No.	5191491	Sheet	1 of 1
Rev	C01		